

ABO | ATLANTA BAROQUE ORCHESTRA

JULIE ANDRIJESKI, DIRECTOR

Tuesday, January 10, 2012

Dear Choir, Band and Orchestra Directors:

Please print out the flyer on the following page and post it for your students in your rehearsal space.

The **Atlanta Baroque Orchestra** and the **Georgia Tech Chamber Choir** invite you and your students to one of two performances of a unique concert, February 4 and 5, 2012.

Georgia Tech Chamber Choir Director Jerry Ulrich will lead the choir, orchestra and soloists in **Handel's *Dixit Dominus***, a demanding and invigorating cantata for soloists, choir and orchestra that he wrote in 1707 when he was only 21. It is rarely performed anywhere, let alone in the historically-informed style for which the Atlanta Baroque Orchestra is renowned.

Our first performance is in **Midtown** at First Presbyterian Church of Atlanta, at **7:00 pm on Saturday, February 4, 2012**. The second performance is in **Roswell**, at Roswell Presbyterian Church, at **3:00 pm on Sunday, February 5**. Student tickets are \$15 online in advance or at the door. For all the details, go to <http://atlantabaroque.org>.

If you come to either concert, **you and your students can meet the singers, instrumentalists, and the directors in a post-concert reception**. Please contact me at the email address or phone number below to let me know that you are coming; I'll make sure you are introduced.

WHAT'S A BAROQUE ORCHESTRA? In its 15th season, the Atlanta Baroque is the oldest chamber orchestra in the Southeast devoted to *early music* and *historically-informed performance*. Members of the orchestra are specialists in playing replicas of the instruments that Handel's orchestra used in the Baroque era. Many of our players are on the faculties of university music schools across the nation.

In a modern orchestra, the players and singers have every note and articulation written out. In the Baroque era, however, soloists were encouraged to *improvise* and ornament their music. Early music performers study how to perform the music more in line with what composers of the era, including Handel, originally intended. Historical instruments produce different sounds and articulations than modern instruments. For instance, Baroque string instruments are strung with sheep gut, rather than steel, and the players use bows of an earlier design. We also use the harpsichord rather than the modern piano, and woodwinds, reeds and brass are of a much earlier design and produce different timbres. The ensemble also tunes down to a lower standard pitch, like they did in the Baroque era.

Overall, you will hear Handel in a refreshing, different context than you've experienced before. We hope this will lead to more discussion and teaching opportunities between you and your students.

The **Georgia Tech Chamber Choir** was founded in 1998 in order to provide especially skilled vocal musician-students with the means to perform a more challenging choral repertoire. The Chamber Choir has become known for its proficiency, artistry, and professionalism, giving concerts throughout the Southeast to critical acclaim. Visit them at <http://gtchamberchoir.com>.

Sincerely,



Wheat Williams
Volunteer Business Administrator
Atlanta Baroque Orchestra
wheat@atlantabaroque.org
(770) 557-7582

Georgia Tech Chamber Choir

ABO | ATLANTA
BAROQUE
ORCHESTRA
JULIE ANDRIJESKI, DIRECTOR



One of the best college choirs around performs Handel's *Dixit Dominus*
with an Early Music Chamber Orchestra

Including the premiere of Dr. Jerry Ulrich's choir and orchestra composition *Lucem Pax*, and Baroque concertos with flutes and oboe.

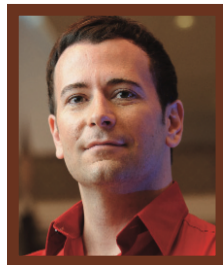
MIDTOWN ATLANTA: 7:00 pm, Saturday, February 4, 2012

at First Presbyterian Church of Atlanta, 1328 Peachtree Street, NE, Atlanta GA 30309

ROSWELL: 3:00 pm, Sunday, February 5, 2012

at Roswell Presbyterian Church, 755 Mimosa Boulevard, Roswell GA 30075

Pre-concert Lecture 45 minutes before each performance • Student Tickets \$15 • More information at atlantabaroque.org



Featuring nationally-renowned soloists
Wanda Yang Temko, Soprano,
and **Terry Barber, Counter-Tenor.**

Meet the Singers and Players

If you want to continue singing and playing music in college, come meet some Georgia Tech students doing just that. Meet the directors, soloists, and instrumentalists after the concert.

The **Atlanta Baroque Orchestra**, in its 15th season, is the first and longest-running professional early music orchestra in the Southeast. Members are professors from music colleges across the nation. The Orchestra is a 501(c)3 non-profit performing arts group.

Visit the Georgia Tech Chamber Choir
at gtchamberchoir.com

Funding is provided by the Fulton County
Board of Commissioners under the guidance of
Fulton County Arts and Culture.

 **FULTON COUNTY
ARTS & CULTURE**